

Meiners Oaks (Unincorporated)

Waterbody: Baldwin Rd. Drain (tributary to Ventura River)

Location: Northwest of Baldwin Rd. and Old Baldwin Rd. intersection (34°25'44.34"N, 119°17'41.25"W)

Pros: Good horizontal control, fairly good access

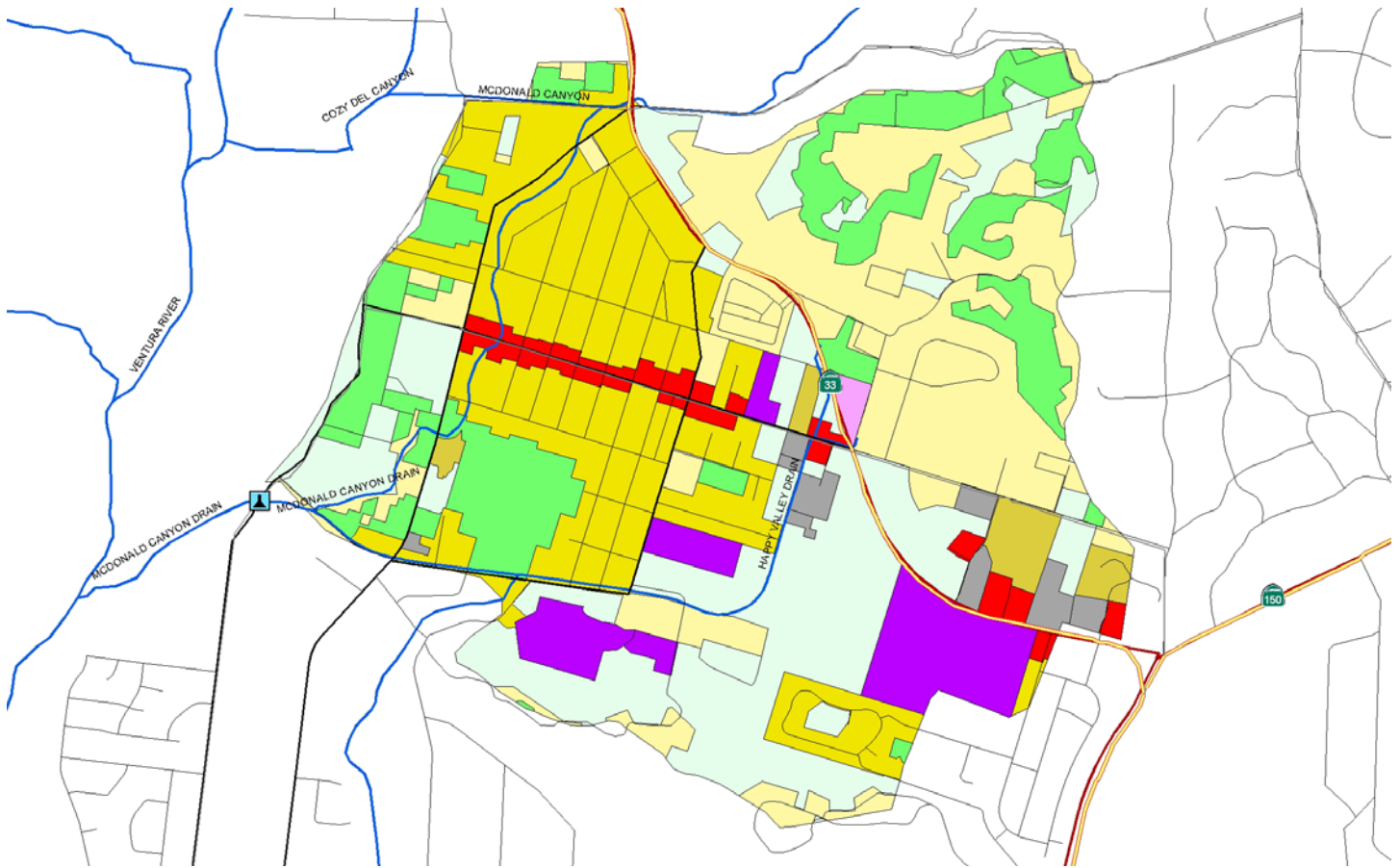
Cons: Vertical control varied (grouted rip-rap), moderate visibility

Outstanding Site Selection Tasks: Assess private property issues

Other Potential Sites: Approximately 100 yds. downstream at Baldwin Rd.

Dry Season Flow Potential: Unknown at end of rainy season; unlikely later in summer





Entire City

Land Use	Acres	% of Total Watershed
Agriculture	658.0	21.5%
Cemeteries	0.0	0.0%
Commercial	33.0	1.1%
Facility	15.5	0.5%
Recreation	29.9	1.0%
Res.1	812.3	26.5%
Res.2	43.9	1.4%
Res.3	463.4	15.1%
Schools	46.5	1.5%
Utilities	19.3	0.6%
Vacant Undifferentiated	945.0	30.8%
Totals	3066.8	100.0%

Selected Subwatershed

Land Use	Acres	% of Total Watershed
Agriculture	152.1	14.8%
Commercial	30.8	3.0%
Facility	20.8	2.0%
Res.1	234.0	22.8%
Res.2	22.0	2.1%
Res.3	249.9	24.4%
Schools	63.6	6.2%
Utilities	3.8	0.4%
Vacant Undifferentiated	248.8	24.3%
Totals	1025.9	100.0%